

drylin[®] linear technology – drylin[®] Q square linear guides

Torque-resistant linear guides

Square section linear rail made from
hard-anodised aluminium

Apply moments up to 10Nm

Adjustable linear carriage with or without
manual clamp

Lubrication-free and lightweight



Torque-resistant, space-saving, light, unsupported installation

Lubrication-free square linear guides – drylin® Q

Linear movement with torque resistance, completely lubrication-free. The drylin® Q linear system offers the user maximum flexibility in the design. Individual housing options such as solid plastic bearings or adjustable housings with or without manual clamp are available. Due to the hollow design, the robust hard-anodised aluminium profile is very light and is suitable for the installation of supply cables. Options for mounting are extensive, among others, using slot nuts; installation size 20 can also be combined with all 20/20 aluminium profiles.

- 100% lubrication-free
- Torque-resistant
- Adjustable bearing clearance
- Applied forces from all directions possible
- Dirt resistance
- Low vibration and quiet
- Numerous mounting options

Typical application areas

- Mechanical engineering
- Wood working industry
- Machine tools
- Handling



Available from stock

Detailed information about delivery time online.



Price breaks online

No minimum order value. No minimum order quantity.



Max. +90°C
Min. -40°C



3 installation sizes (10/12/20)
Rail length: 1,500/3,000mm



Technical details on floating bearings, 2:1 Rule, tightening torque for drylin® metallic screws ▶ Page 963

Hollow rail for supply lines and magnetic tape

Profile made from hard-anodised aluminium

Torque-resistant square geometry

End cap made from solid plastic

Main body of the carriage made from clear anodised aluminium

Sliding elements made from high-performance polymer iglidur® J

Adjustable bearing clearance

Linear system with individual housing versions



Square section linear rails

- Material: aluminium, hard-anodised
 - Lightweight and corrosion-resistant
 - Hollow rail design for cables to feed-through
- ▶ Page 1178



Linear carriage

- Unsupported carriage version with/without manual clamp
 - Numerous fastening options on all sides via slot nuts
 - Bearing clearance adjustable
- ▶ Page 1179



Bearing housing

- Enclosed anodised aluminium housing
 - Apply moments up to 3Nm (size 10), 10Nm (size 20)
 - Torque-resistant sliding elements made from iglidur® J
- ▶ Page 1181

Sliding plates for clearance adjustment

- Tolerance compensation for profiles, including lifting columns
 - Adjustment mechanism included
 - Easy assembly
- ▶ Page 1185



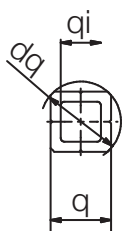
Measuring systems

drylin® QKM
▶ Page 1187



Cantilever axis

drylin® GRQ miniature linear module
▶ Page 1443

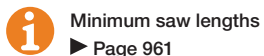


Order key

Type Size Option

AWM Q - 10 -1000

Aluminium shaft	Metric	Square design	Installation size	Length [mm]
-----------------	--------	---------------	-------------------	-------------



Minimum saw lengths

▶ Page 961

Dimensions [mm]

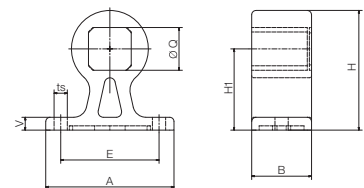
Part No.	Weight [kg/m]	q	dq	qi ±0.02	Max. length
AWMQ-10	0.082	7.5	10	5	1,500
AWMQ-12	0.193	12	16	8.5	1,500
AWMQ-20	0.46	20	25	15	3,000

Accessories

Shaft end supports made from plastic



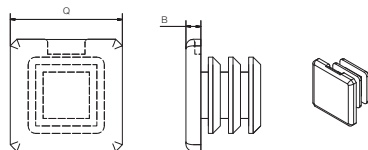
- Cost-effective mounting option
- Can also be used as floating bearing



Dimensions [mm]

Part No.	A	H	B	Q	H1	E	ts	V
STZ-Q10-01-FL	30	21	14	7.5	14	20	3.3	3
STZ-Q20-01-FL	60	56	28	20	38	46	6.2	6

End caps for square section linear rail



Dimensions [mm]

Part No.	Q	B
STZ-Q10-01-C	7.5	1
STZ-Q20-01-C	20	5

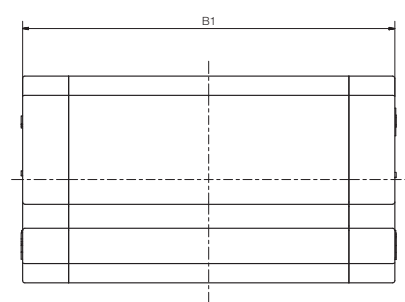
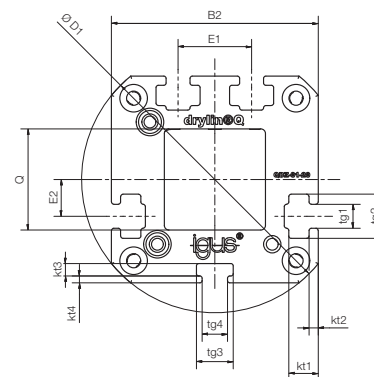


Order key

Type Size

QWE - 01 -20

Square	Linear carriage	Adjustable	Standard design	Installation size
--------	-----------------	------------	-----------------	-------------------



Dimensions [mm]

Part No.	Weight [g]	M max. [Nm]	B1	B2 h7	D1	Q	E1	E2	tg1	tg2	tg3	tg4	kt1	kt2	kt3	kt4
QWE-01-12	110	5	80	34	44	12	12	6	5.5	8	8	—	—	—	3	1.25
QWE-01-20	210	10	81	45	58	20	16	8	5.5	9.6	8	5.5	6.4	2	2.7	1.5

Accessories: Slot nuts



Slot nuts offers attachment options (for example sensors) on four sides of the housing. 8 pieces are included in the delivery of a QWE carriage.

Part No.: NOR-20602

Can be combined with:



AWMQ-12



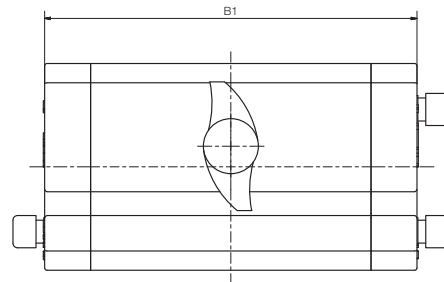
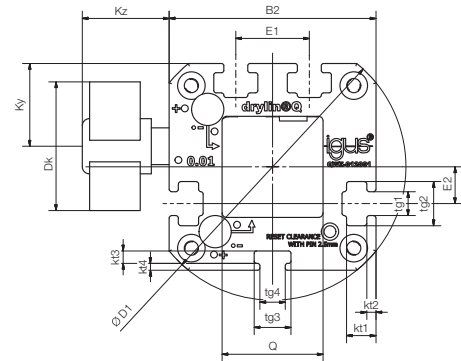
AWMQ-20



Type	Size	Options
------	------	---------

QWE-01-20-HKA

Square	Linear carriage
Linear carriage	Adjustable
Adjustable	Standard design
Standard design	Installation size
Installation size	Manual clamp
Manual clamp	



Dimensions [mm]

Part No.	Weight [g]	M max. [Nm]	B1	B2 h7	D1	Q	E1	E2	tg1	tg2	tg3	tg4
QWE-01-12-HKA	–	–	80	34	44	12	12	6	5.5	8	8	–
QWE-01-20-HKA	215	10	81	45	58	20	16	8	5.2	9.6	8	5.5

Part No.	kt1	kt2	kt3	kt4	Dk	Ky	Kz
QWE-01-12-HKA	–	–	3	1.25	18	14	19
QWE-01-20-HKA	6.4	2	2.7	1.5	28	18	19

i The manual clamp thread was developed for simple tasks. The creep behaviour of the clamped plastic causes a reduction in clamping force over time (up to 70%). Therefore no safety-relevant parts may be clamped. Please contact our technical consultant, if you require other options for the clamping.

Can be combined with:



AWMQ-20

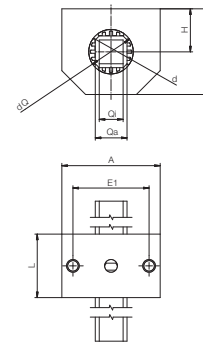


Type	Size
------	------

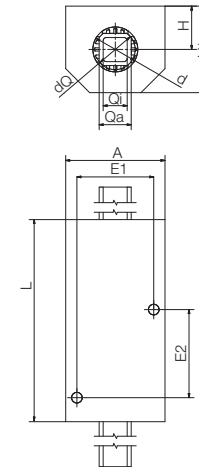
QJRM-05-20

Square	iglidur® J
iglidur® J	Closed design
Closed design	Metric
Metric	Tandem (optional)
Tandem (optional)	Compact design
Compact design	Installation size
Installation size	

QJRM-05-20



QJRMT-05-20



Technical data [mm]

Part No.	Weight [kg]	Mx [Nm]	Surface pressure	
			dynamic [N]	static [N]
QJRM-05-20	0.25	5	1,500	10,500
QJRMT-05-20	0.55	10	1,500	10,500

Dimensions [mm]

Part No.	A	H ±0.02	H1	dQ	Qa	Qi	E1 ±0.15	E2 ±0.15	d	L
QJRMT-05-20	62	27	54	25	20	15	48	55	28	85

Can be combined with:



AWMQ-20



QJFM-02-...



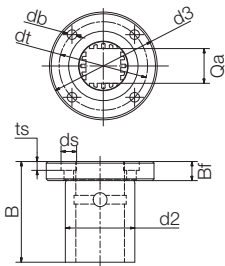
QJFMT-01-...



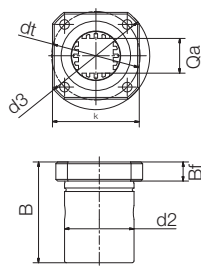
Order key

Type	Option	Size
Q J F M T - 02 - 10		
Square	iglidur® J	Installation size
With flange	Metric	Options: 01 = Round flange 02 = Square flange
Tandem (optional)	Design	

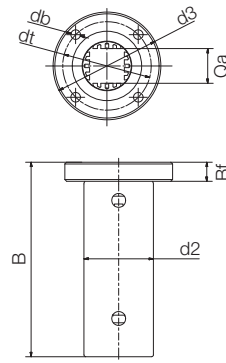
QJFM-01



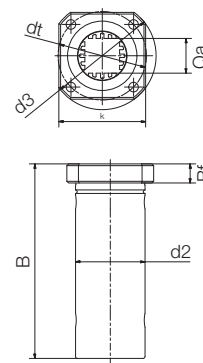
QJFM-02



QJFMT-01



QJFMT-02

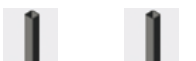


Technical data and dimensions [mm]

Part No.	Weight [kg]	Surface pressure		Mx [Nm]
		dynamic [N]	static [N]	
QJFM-01-20	0.14	1,500	10,500	5
QJFM-02-20	0.14	1,500	10,500	5
QJFMT-02-10	0.038	-	-	3
QJFMT-01-20	0.24	1,500	10,500	10
QJFMT-02-20	0.24	1,500	10,500	10

Part No.	k	d2	Bf	Qa	d3	dt	B	db	ds	ts
		h7			±0.15	±0.15				
QJFM-01-20	-	40	11	20	62	51	58	5.5	9.0	5.1
QJFM-02-20	50	40	11	20	62	51	58	5.5	9.0	5.1
QJFMT-02-10	30	19	9	7.5	39	29	52	4.5	7.5	4.1
QJFMT-01-20	-	40	11	20	62	51	112	5.5	9.0	5.1
QJFMT-02-20	50	40	11	20	62	51	112	5.5	9.0	5.1

Can be combined with:

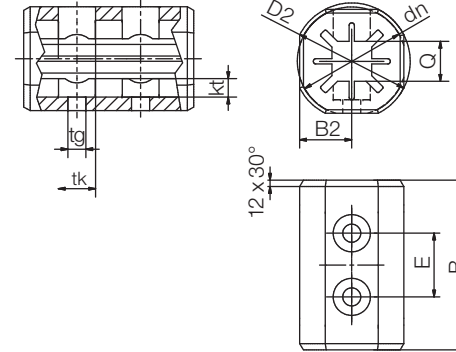


AWMQ-10 AWMQ-20



Order key

Type	Size
Q J R M P - 01 - 10	
Square	Installation size
iglidur® J	Options: 01 = Round flange 02 = Square flange
Closed design	Design
Metric	
Solid plastic	



Manual clamp available.
Suffix "-HKA"

Dimensions [mm]

Part No.	Weight [g]	M max. [Nm]	B	B2	D2	dn	E	Q	tk	tg	kt
QJRMP-01-10	11.3	3	32	9.8	22	22	12	7.5	6	3.4	3.5



Pipette unit equipped with drylin® Q square linear guide combined with drylin® GRW cantilever axis and NEMA stepper motor

Can be combined with:



AWMQ-10



- Hollow rail for supply lines (compressed air, cable)
- Small space requirement
- A host of possible applications

Single components



Adapter for flange shaft block

Part No.
STZ-Q10-AR-1012-16



Adapter kit e.g. for grippers/sensors

Part No.
STZ-Q10-01-AM



Plastic shaft end supports

Part No.
STZ-Q10-01-FL
STZ-Q10-01-LL



Chain connection for e-chain® E2 micro

Part No.
STZ-Q10-01-AC-E2



End caps for square-section rail

Part No.
STZ-Q10-01-C
STZ-Q20-01-C



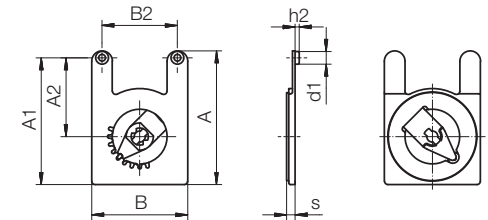
- Clearance-reduced guidance of the lifting columns by adjustment mechanism
- Low-cost due to injection moulding
- Lightweight solid plastic solution
- Lubrication-free, wear-resistant, maintenance-free due to dry-tech® polymer iglidur® J
- Corrosion-free

Order key

Type Option Size

ASD J - 28 - 025

Type	iglidur® J	Width B	Installation size
------	------------	---------	-------------------



Dimensions [mm]

Part No.	Weight [g]	s		A	B	A1	A2	B2	d1	h2
		Min.	Max.							
ASDJ-28-025 New	1.9	2.2	2.8	39	28	37	23	±0.15	-0.1	±0.1



Adjustment key Part No.
ASDZ-012817

