

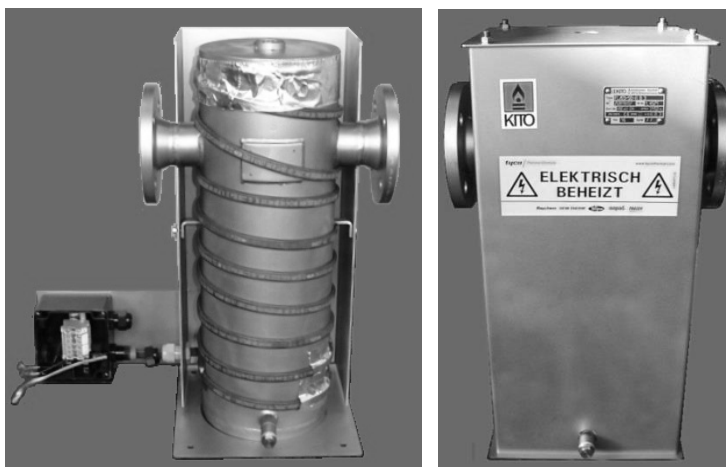
Electrical heating for KITO®-Armatures (with and without KITO® flame arrester)

Application

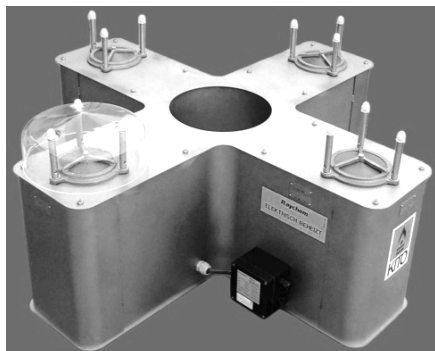
Frost protection or heating for constant temperature in the valve casings for ambient temperatures down to -20 °C. Heater cables of temperature classes T4 and T6 are used depending on the product to be heated. A constant heating is only permitted up to ambient temperatures $\leq +20$ °C. An electrical fuse of at least 10 amps is required as a safety measurement. The use of a residual current circuit breaker (30 mA) is recommended.

Example

Example : KITO® FL/EO-...-IIB3



Example : KITO® DS/M-IIA-...-A



Example : KITO® VD/KL-IIA-...-A



Example : KITO® FD6-Det4-...-1.2



Design

Self-limiting heating cables with a few turns wrapped around the valve housing. Fixing the heating cable with temperature-resistant tape with a 30 mm thick mineral wool insulation and a protective sheath of stainless steel, with a connection box IP 65. Heating cables and connection box ATEX-approved and CE mark for use in Zone 1. Supply of a temperature sensor Pt100 or a temperature control is possible. Type of cable and length chosen according to the surface of the casing, the required temperature and the safety-related data of the product specifically

- Current consumption per meter heater band depending on type of heater band 16-30 W at -20 °C
- Max. heater band temperature is about 110 °C
- Operating voltage 230 V

The dimensions of the KITO®-Armatures may differ from the original dimensions due to the design.